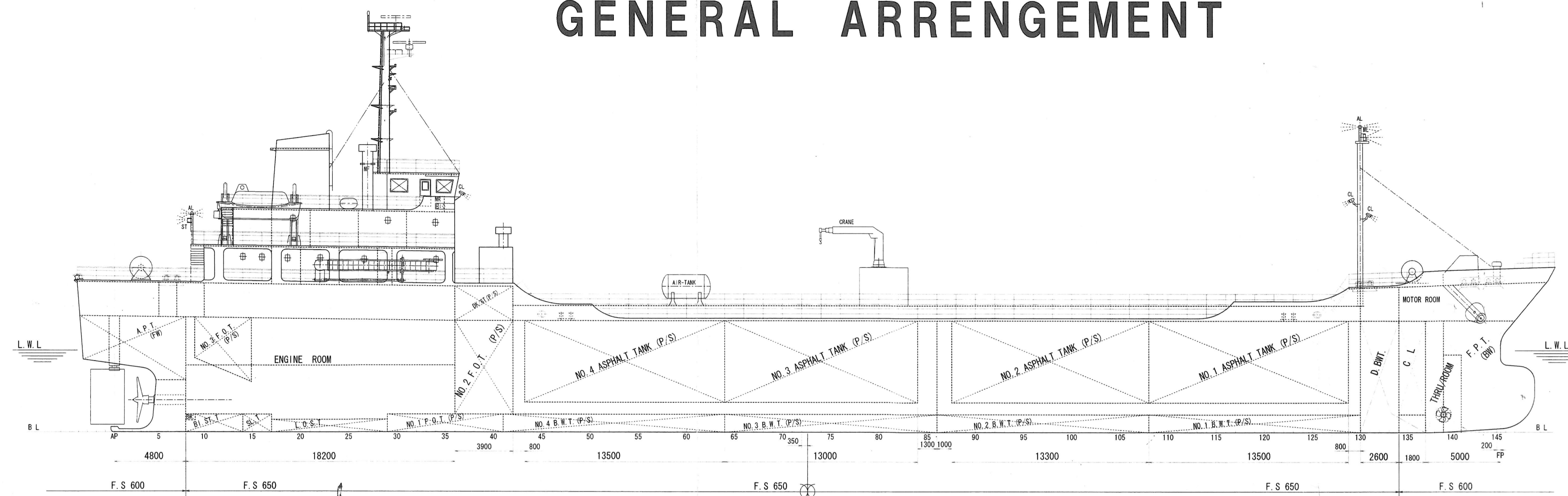


NOTE

25. MAR. 2002 This Plan was drawn at our works.  
19. MAR. 2003 ADJUSTED FOR FINISHED PLAN

# GENERAL ARRANGEMENT



PRINCIPAL PARTICULARS

LENGTH (O. A)	99.70
LENGTH (P. P)	93.50
BREADTH (MLD)	15.60
DEPTH (MLD)	7.50
DRAFT (DESIGNED)	5.50
GROSS TONNAGE	3378 <sup>T</sup>
DEAD WEIGHT	4318.30 <sup>T</sup>
C. O. T CAPACITY	3368.20m <sup>3</sup>
MAIN ENGINE	2427KW
SPEED (SEA TRIAL MAX)	15.136 <sup>knot</sup>
COMPLEMENT	20P
GOING AREA	OCEAN GOING
CLASS	NK NS*(Asphalt Tanker) MNS *

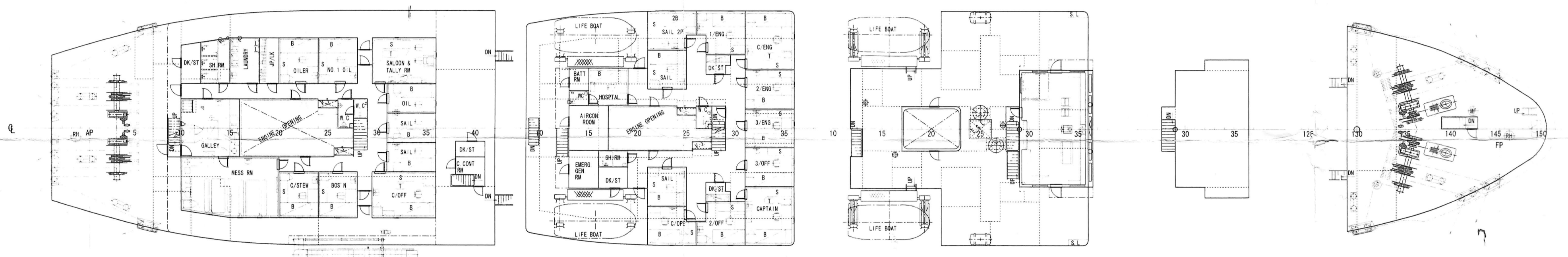
POOP DECK PLAN

BOAT DECK PLAN

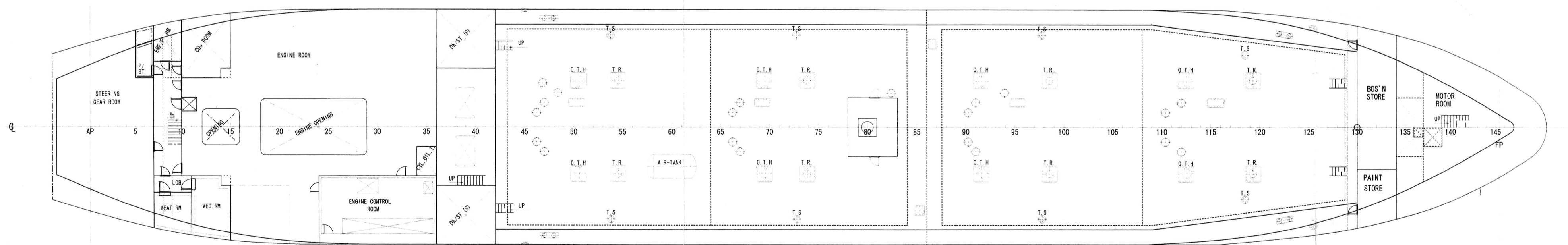
NAV. BRI. DECK PLAN

COMPASS. DECK PLAN

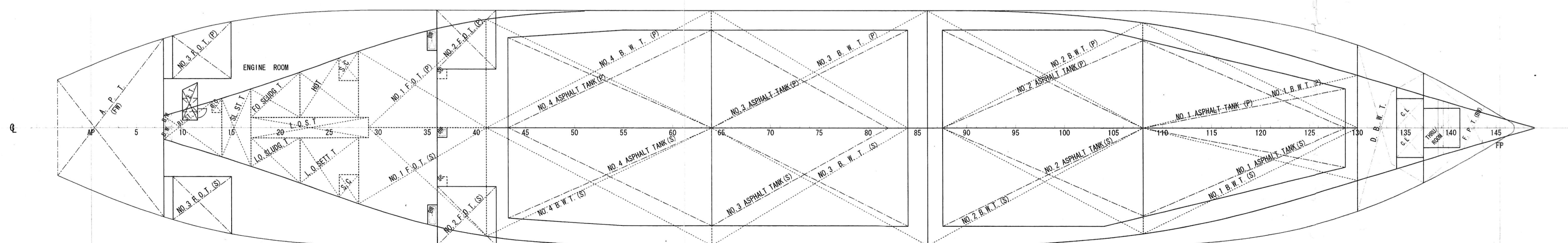
F' CLE DECK PLAN



UPPER DECK PLAN



BOTTOM PLAN



FIN OCEAN

SHIP No.	SNo 375
NAME OF OWNER	MAY TANKER SDN BHD
NAME OF SHIP	PUSAKA ABADI
KIND OF SHIP	ASPHALT TANKER

(3600m<sup>3</sup>型) ASPHALT)  
**GENERAL ARRANGEMENT**

SCALE	1 / 200
-------	---------

KURINOURA DOCKYARD CO., LTD  
YAWATAHAMA JAPAN

DRAWN BY	H.T.
CHECKED BY	
CHIEF OF PART	
CHIEF OF SECT	
DATE	25. MAR. 2002
DRWG. NO.	H - 2